

APWQ 2010 Summer Symposium Questions?!

Q: I am not a current member of APWQ. Can I enclose a membership form and payment with my Symposium registration?

A: Yes! You can print out a Membership Form (<http://apwq.org/membership.html>), enclose payment and send it with your Symposium forms.

Q: Can I fax my registration?

A: Sorry, we are only equipped to handle registrations by mail. No phone, fax or email registrations will be accepted. Walk-in registrations will only be accepted at Sew Expo, February 25-28

Q: Can you explain the Symposium class format?

A: You will take one workshop a day. The workshops for Friday and Saturday are full day classes (6 hrs) and Sunday is a half day class (3 hrs).

Q: What does a teacher helper do?

A: This special volunteer will take attendance, collect any kit fees for the instructor and pass out and collect class evaluation forms. It is fun job and a big help to the instructor.

Q: How are workshops assigned? I live in a rural area and it takes forever for my mail to get anywhere.

A: Don't worry, workshops will be assigned based on the postmark date and not by when they are received.

Q: When will I know which classes I am in?

A: We will try our best to process registrations within 10 business days of when we receive your payment and completed forms. Workshop notification will be sent via email or USPS.

Q: What is the basic agenda for the event?

A: Thursday afternoon is arrival, registration, dinner and the Welcome Event. Friday and Saturday will be breakfast, class time, lunch, class time, dinner and Evening Programs. Sunday will be breakfast, class time, lunch and the Closing Event. We will send the hourly schedule when all details have been finalized. We hope to make it a relaxing, informative and fun weekend!

Q: When does registration begin for non APWQ members?

A: Open Registration begins March 15, 2010

Q: What about single day registrations?

A: Single Day Registration will start after April 19, 2010, based upon availability.

Q: What is the weather like in August in the Pacific Northwest? Is it really always rainy there?

A: Well... we do have a lot of grey, rainy days, but August is *usually* the warmest month of the year with an average precipitation of 1.1". The average high for Olympia is 77 and the low is 50. Locals say summer starts the 5th of July! It may be a good idea to check the weather forecast before you travel as the temps can range from the low 70's to the low 90's.

Q: What about the campus layout?

A: The Evergreen campus is flat but very expansive. It is a bit of a trek between the dorm rooms, classrooms and the cafeteria. Bring your walking shoes!

Q: Is the campus handicap accessible?

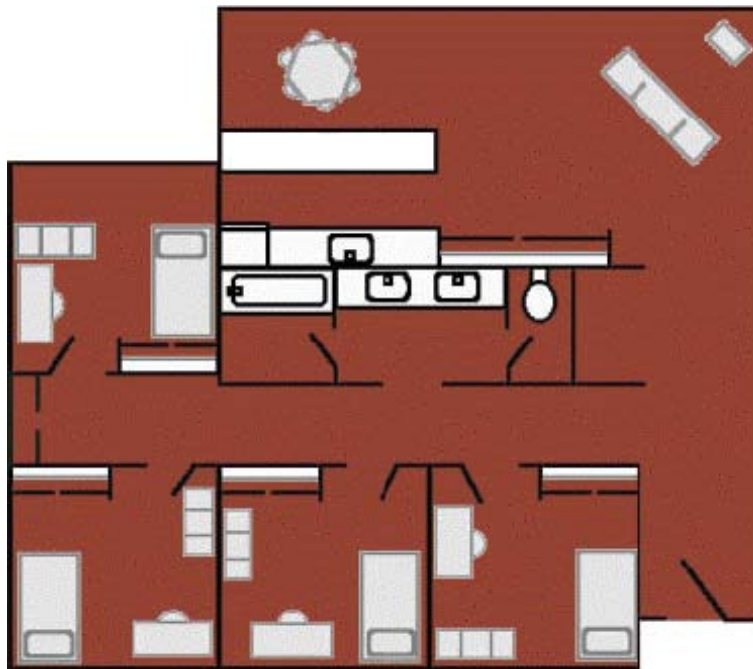
A: Yes, the college is ADA compliant. They have accessible facilities and accessible parking spaces. Please make sure to note on the registration form any special needs you may have.

Q: What types of food does the cafeteria offer?

A: The Greenery is the college cafeteria and offers cutting-edge American entrees, ethnically-inspired foods, vegetarian selections and a salad bar with fresh-cut, organic vegetables. There is also a Convenience Store where you can purchase snacks, candy and other sundry items.

Q: What about the dorms rooms?!

A: The Evergreen State College campus offers apartment style suites. These consist of four or six private bedrooms with a shared bathroom, kitchen and living room. The drawing below is an example of how they are set up. Linens are provided and there is a daily towel exchange. BYOQ (Bring your own quilt!)



Example of a Four Person Apartment Style Suite

Typical common area furniture includes: couch, coffee table, lounge chair, dining table

Typical bedroom furniture includes: twin-size bed with mattress pad and frame, desk, chair, dresser, closet, trash can.